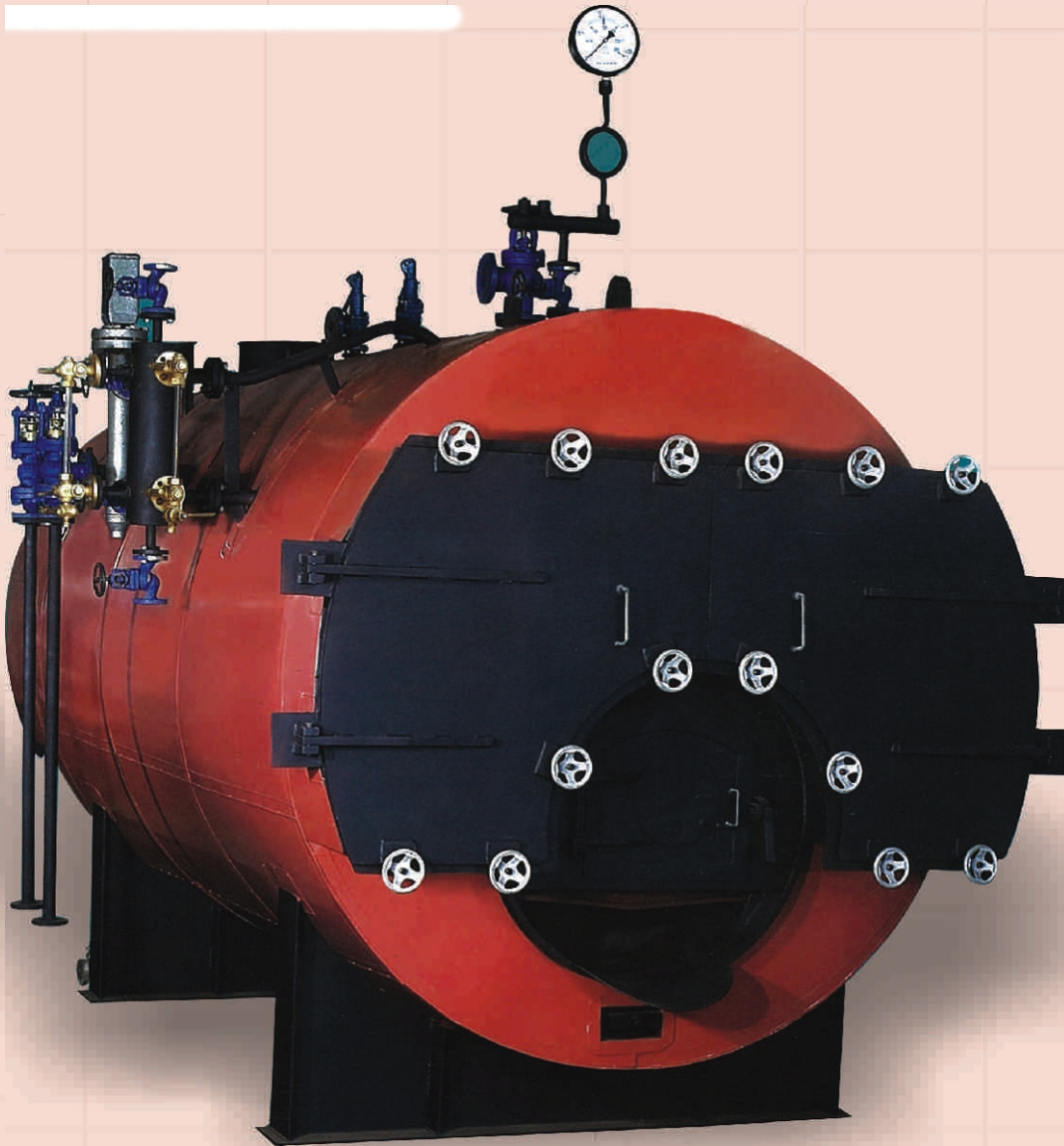




SUNSEED ENGINEERS

SOLID FUEL FIRED PACKAGED STEAM BOILER



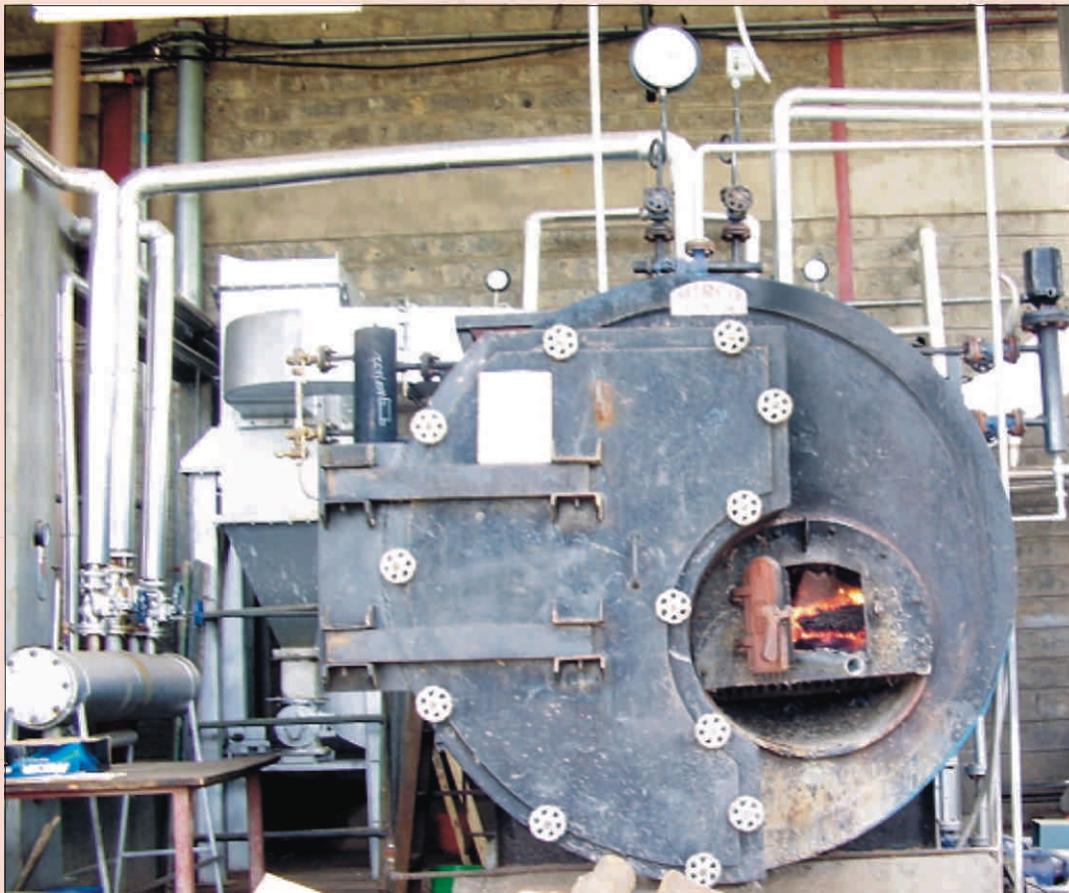
SUNSEED ENGINEERS

Off. No. : GB-12, Block "A" Mansarovar Complex,
Bhopal, 462011 (India) Ph.: +91 755 4222929
Email : sunseedengg@hotmail.com
www.sunseedengineers.com

SOLID FUEL FIRED PACKAGED STEAM BOILER

**WE CAN SUPPLY COAL / COTTON HUSK / RICE HUSK / WOOD FIRED
STEAM BOILER WITH CAPACITY FROM 500 KG/HR TO 4000 KG/HR**

WOOD FIRED PACKAGED STEAM BOILER



TECHNICAL SPECIFICATION

| MODEL | UNIT | 500 | 800 | 1000 | 1500 | 2000 | 2500 | 3000 | 4000 |
|--------------------------|--------------------|--|-----|------|-------|-------|-------|-------|-------|
| Evaporation F&A 100°C | kg/hr | 500 | 800 | 1000 | 1500 | 2000 | 2500 | 3000 | 4000 |
| Rating | m ² | 21 | 34 | 42 | 63 | 85 | 105 | 125 | 172 |
| Working Pressure | Kg/cm ² | ←———— 10.54kg/cm ² to 17.5kg/cm ² —————→ | | | | | | | |
| Efficiency on NCV | % | ←———— 76±2% —————→ | | | | | | | |
| Coal Consumption | kg/hr | 80 | 128 | 160 | 240 | 320 | 400 | 480 | 640 |
| Design Code | | ←———— IBR or ISO/R-831 or ASME or BS —————→ | | | | | | | |
| Electric Supply | | ←———— 415 Volts,50Hz,3-Ph,4 Wire —————→ | | | | | | | |
| Feed Pump | HP | 3X2 | 5X2 | 5X2 | 7.5X2 | 7.5X2 | 7.5X2 | 7.5X2 | 7.5X2 |
| ID Fan | HP | 3 | 5 | 5 | 7.5 | 10 | 12.5 | 15 | 20 |